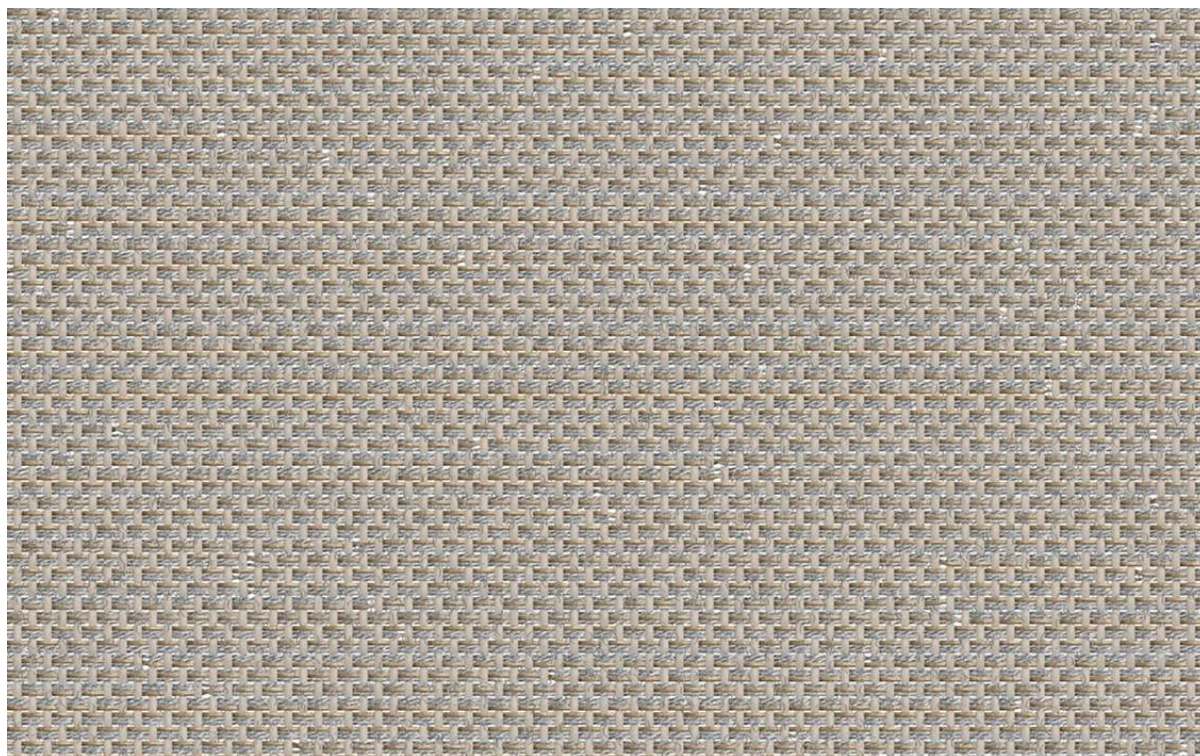


## BATYLINE®: BEIGE GRAY

7710-50561



Serge Ferrari Batyline® open-weave mesh textile is a fully recyclable product comprised of woven polyester fibers protected with a PVC coating. Serge Ferrari Smart Yarn technology ensures the textile is immune to both stretching and cracking. It is resistant to UV light, mildew and micro-organisms, and requires minimal maintenance. Batyline®

Textile is used on our duVal Yacht Chaise, Fayette Yacht Chairs, and Beaufort Yacht Chairs.

**Item Width:** 70.9"

**Weight:** 13.3 ounces per yard

**Content:** 72% PVC, 20% Polyester, 8% Synthetic Fiber

**Martindale Abrasion Rating:** 50,000