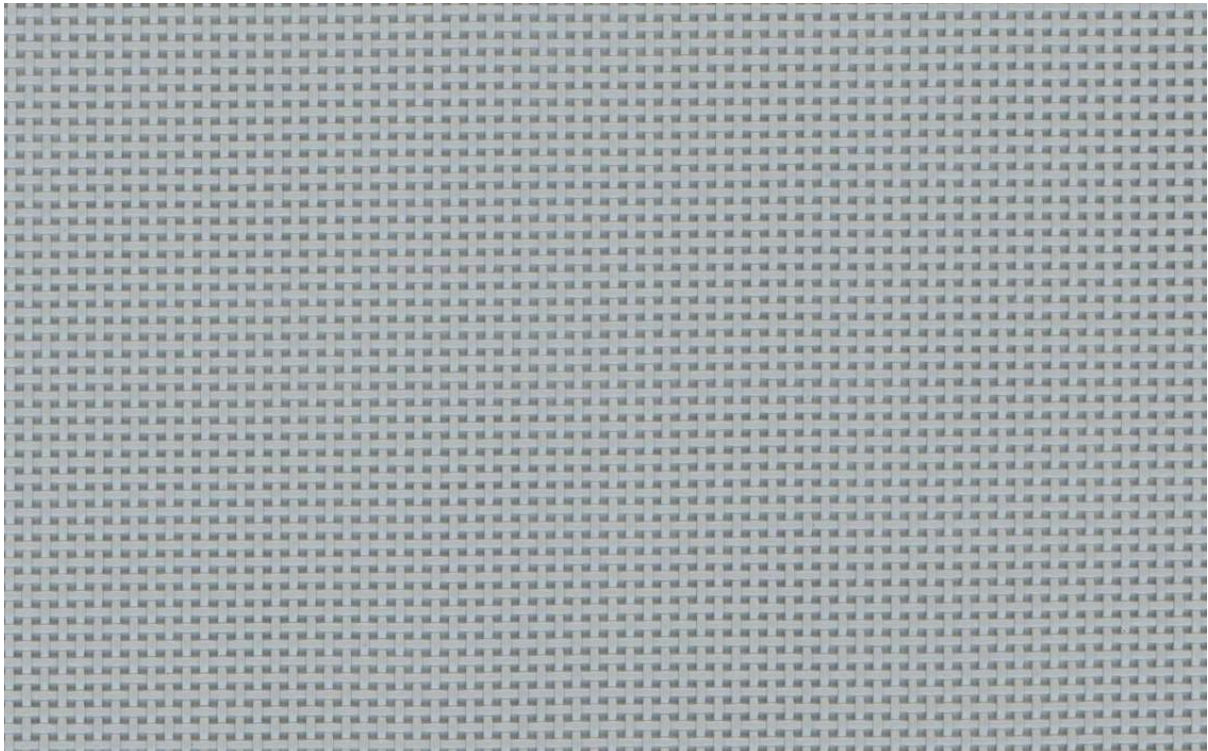


BATYLINE®: PLATINUM GRAY

7407-5374



Serge Ferrari Batyline® open-weave mesh textile is a fully recyclable product comprised of woven polyester fibers protected with a PVC coating. Serge Ferrari Smart Yarn technology ensures the textile is immune to both stretching and cracking. It is resistant to UV light, mildew and micro-organisms, and requires minimal maintenance. Batyline® Textile is used on our duVal Yacht Chaise, Fayette Yacht Chairs, and Beaufort Yacht Chairs.

Item Width: 70.9"

Weight: 13.3 ounces per yard

Content: 72% PVC, 20% Polyester, 8% Synthetic Fiber

Martindale Abrasion Rating: 50,000